

**FJORD**  
*BE UNIQUE*



**38**  
*xpress*

**38**  
*xpress*



**BE** **UNIQUE**  
*DRIVE IT. BEACH IT. SHOW IT.*

---

The FJORD 38 xpress boasts all the trademarks of FJORD. And yet, it opens up a whole new world of freedom thanks to its outboard engines. Experience rapid boating in shallow waters, anchor right inshore and enjoy direct access to the beach. Be spontaneous: you decide where you go and when to drop the hook.

*PASSIONATE FOR*  
***POWER***



*43 KN*  
max. speed

*700 HP*  
with two engines

*12 CYLINDERS*  
in two outboards





---

The FJORD 38 xpress exudes a dynamism that you can feel in every fibre of your being. Once you set it free, its 700 hp effortlessly breaks the 40 kn mark and makes you feel like you are flying as you slice through the water.



## *SET YOUR PULSE RACING*

---

Whether you are leaving a tight mooring location or pushing the throttle to the limits, you can always manoeuvre the FJORD 38 xpress with the greatest of ease. So you can relax and enjoy the moment.





## *DRIVEN BY OUTBOARDS*

---

Each construction detail of the FJORD 38 xpress aims to perfectly leverage the unique convenience of outboard engines. Low-speed manoeuvring and steering the boat astern is remarkably simple. In addition, you benefit from the engines' quiet operation, low maintenance and reliability in all weathers.



## *THE CAPTAIN'S BRIDGE*

Matching the iconic overall appearance of the FJORD 38 xpress, the dashboard features a stylish glass bridge design. Enjoy ultimate control of all electronic displays through a single touchscreen interface.





Variety is the spice of life. Explore the water world, throw a party, worship the sun or burst out laughing while chatting with friends. The FJORD 38 xpress is ready for any activity or experience that may fill you with joy.

*THE WHOLE RANGE OF*  
***PLEASURES***







## *LET'S DIVE INTO LIFE!*

---

Trimming up the outboards reduces the draught to a minimum and allows diving, snorkeling or bathing close to the shore. Take the opportunity to visit the hidden coves and lonely beaches that others can't reach.





After a thrilling ride across the sea, you can enjoy rest and relaxation once again on your FJORD. How you do this is up to you: with a single motion, you can convert the smart cockpit furniture from a table for eight to a sun lounger. The extralarge canopy can be unfurled from the T-Top to cover the entire length of the boat.





Gastronomic delights are an essential part of your lifestyle? Opt for a main deck layout with multifunctional galley, including gas ring and champagne cooler.

---





Attracting glances wherever it goes, the FJORD 38 xpress gets everyone's attention. The clear-cut hull with vertical stem. The signature high-rise T-Top. The wide cockpit lounge, framed by a robust bulwark.

This is design that turns heads and makes hearts beat faster – even when the boat is at rest.

---

*FORM FOLLOWS*  
***FASCINATION***





## *LITERALLY OUTSTANDING – THE T-TOP*

---

At first sight, the distinctive T-Top steals the show from any other motor yacht around. At second glance, it reveals all the special fittings installed, such as ambient lightning and dark tinted skylights.





---

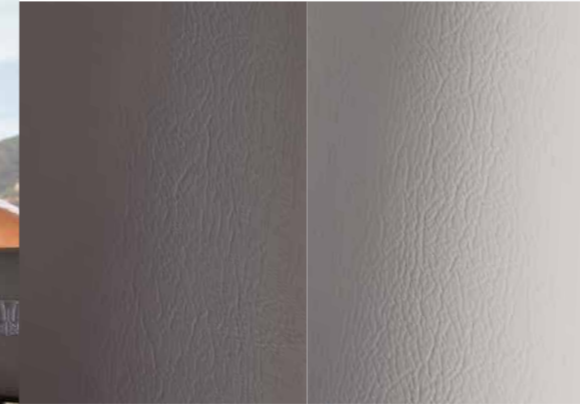
The T-Top – an iconic feature of yacht construction – works with the frameless windscreen design as a stylistic unity and steals the show from any other motor yacht around.

# EXPRESSIVE EXTERIOR

Among the many individual statements you make through your FJORD, the hull paint stands out most. That's why the entire range of colours is at your disposal, from prestigious to very extravagant hues. Based on your requirements, FJORD can also develop special coating effects or multicolour hull designs.



helm seat upholstery – synthetic & ultraleather



dark grey

light grey



red

mandarin orange

cream

The materials depicted are a tiny sampling of what is available. Your FJORD dealer will show you the entire choice.



The hull can be painted in almost any colour.



marine salt



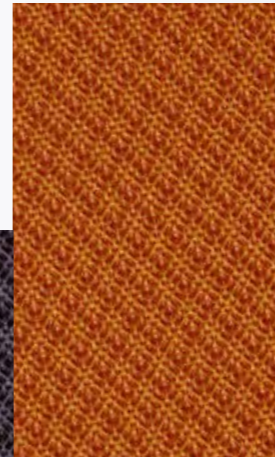
olive grove



aubergine



cubic cayenne



cockpit bench & sunbed upholstery



shore grey  
harbour seal  
gull wing  
matrix

rattan  
gulf stream  
lobster

*SURROUNDED WITH*

# *STYLE*

---

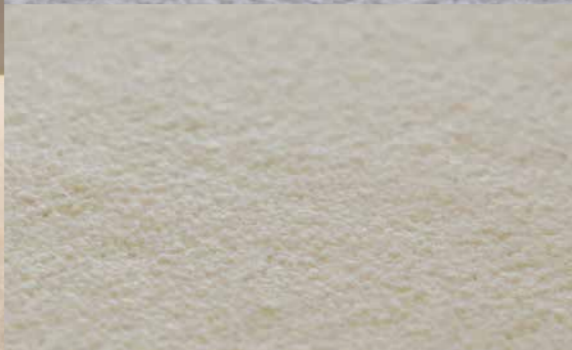
Even below deck, the keyword on board is relaxation. The owner's cabin invites you to indulge in total privacy at any hour of the day. Its elegant and sophisticated detailing welcomes you in exclusive style. Reward your senses with the generous scale of the space and the soft, calming light.







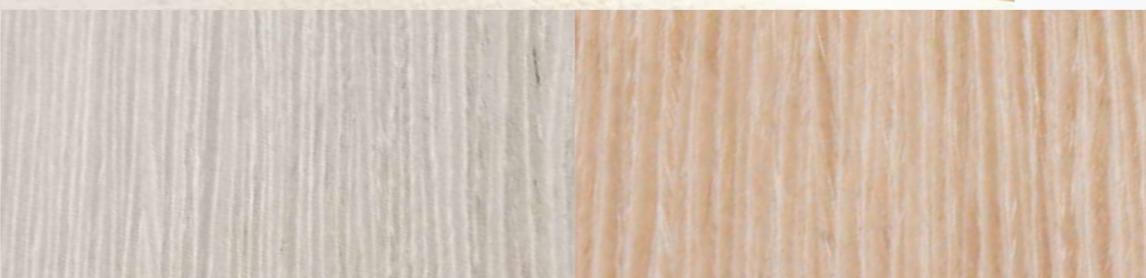
carpets



ice cube  
sugar

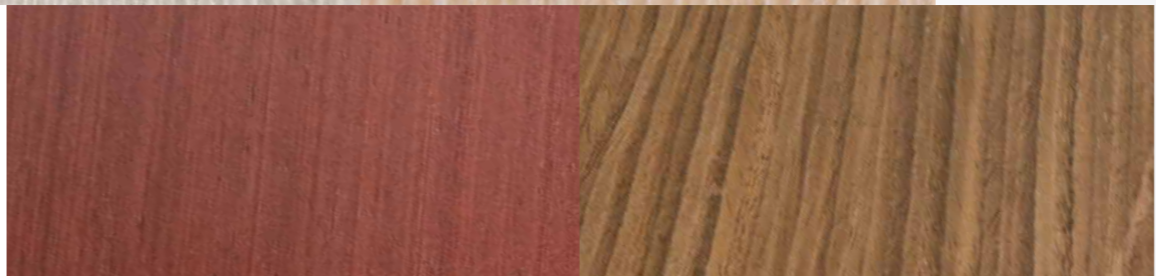


tobacco  
coffee



furniture wood

- lisboa chestnut
- milano oak



warm mahogany  
atlanta walnut



upholstery –  
scoop leather

- ivory
- clay
- mud
- amber
- basalt

## INDIVIDUALISED INTERIOR

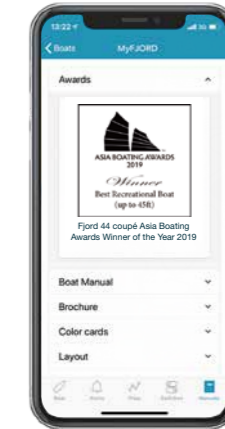
The staterooms on a FJORD are unique, where the owner expresses all their personality. Handpicked from top-class manufacturers, the choice of fabrics, furniture woods, floorings and leathers spans an enormous range of styles and colours.



# MY FJORD SAFETY CLOUD

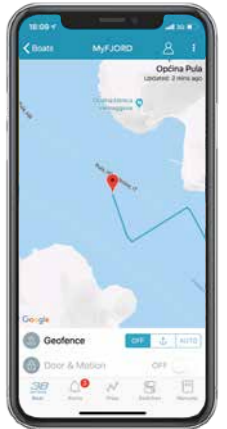
Everyone is talking about the digital future. But FJORD is implementing it – with the first cloud-based telematics system for series production motor yachts. You can access your boat's technical data and functions live via the mobile app or via the owner's area at [www.fjordboats.com](http://www.fjordboats.com)

Intelligent functions such as BoatMonitoring, eLogbook and eServicebook enable you to keep an automatic logbook, stay on top of all servicing dates and monitor your yacht seamlessly.



**MANUALS**

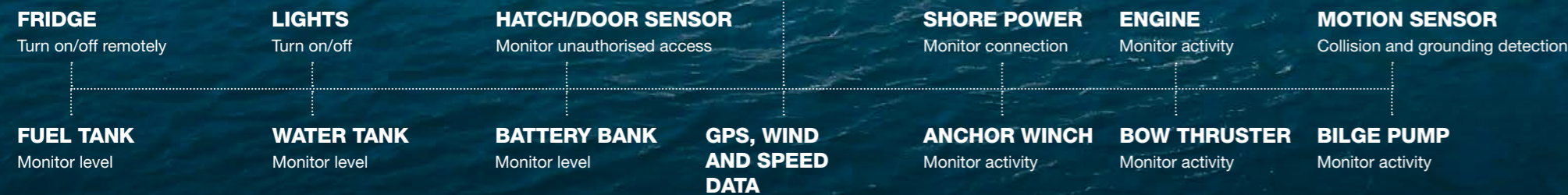
All manuals and instructions within one app.



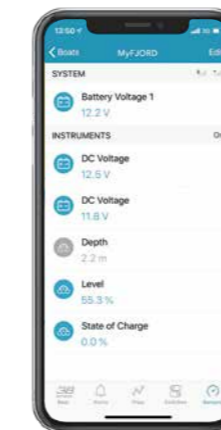
**POSITION**

Track your position in real time.

## BOAT MONITOR\*

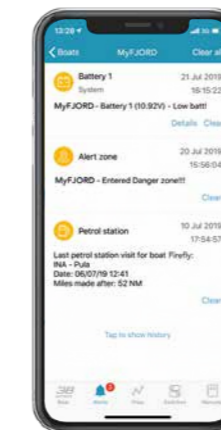


\* Control and sensors depend on the configuration of your FJORD.



**SENSORS**

Monitor your charge levels and devices.



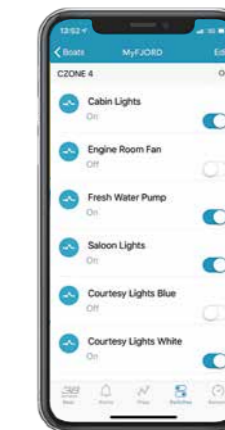
**ALARMS**

Push notifications on current events.



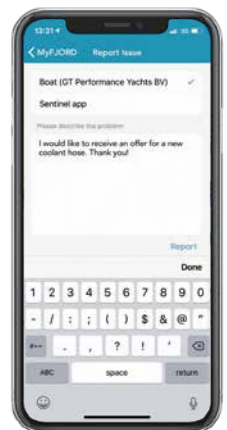
**TRIP LOG**

Share your cruises and track data with friends.



**CONTROL**

Operate your electronic devices by remote control.



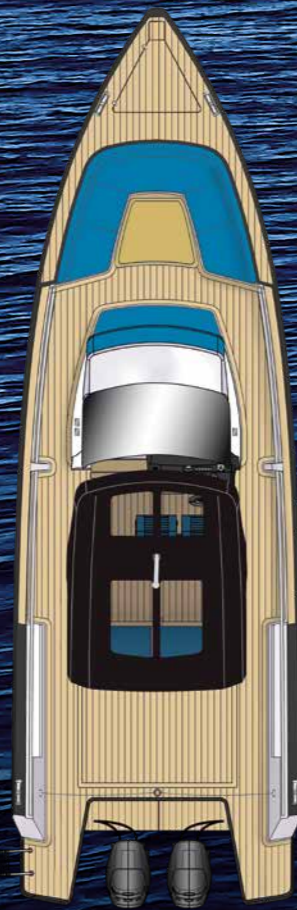
**LIVE REPORT**

Direct contact to your dealer for quick help.

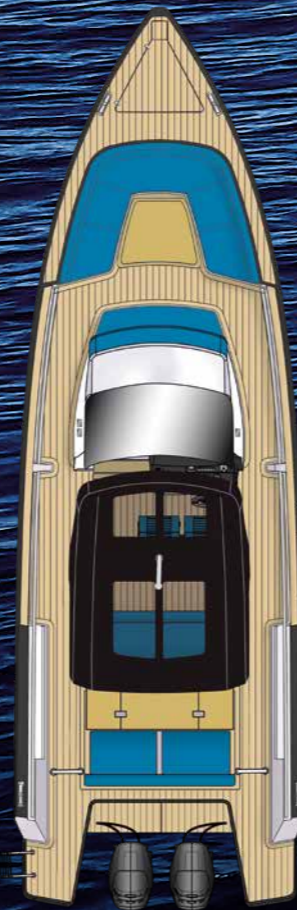
# LAYOUT OF YOUR CHOICE



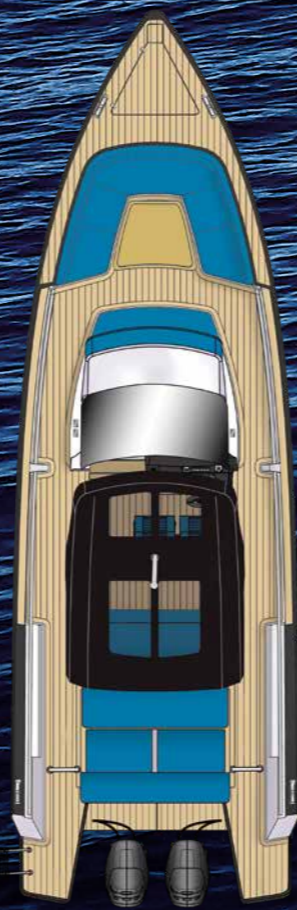
**MAIN DECK**  
standard



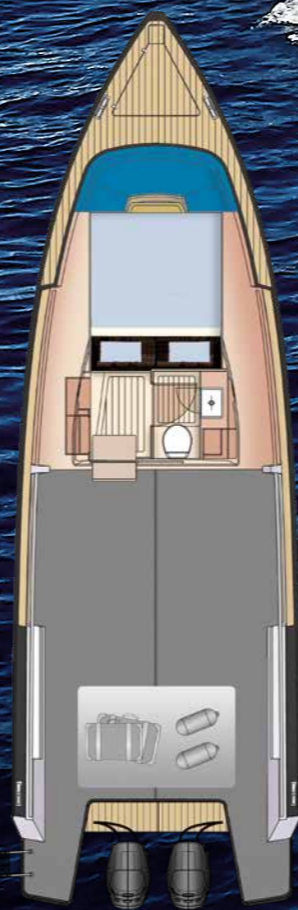
**MAIN DECK**  
standard  
with t-top



**MAIN DECK**  
option  
with galley and aft bench  
with fixed cockpit table



**MAIN DECK**  
option  
with galley and aft bench  
with lowerable cockpit table



**CABIN CONCEPT**



## TECHNICAL DETAILS

<b>LOA</b>	11.63 m	38' 2"
<b>Hull length</b>	11.28 m	37' 0"
<b>Beam</b>	3.64 m	11' 11"
<b>Draught</b>	0.94 m	3' 1"
<b>Fresh water capacity</b>	200 l	44 UK gal
<b>Fuel capacity</b>	758 l	167 UK gal
<b>Displacement</b>	6.06 t	5.96 UK t
<b>CE Category</b>	B	B
<b>Max. persons</b>	12	12
<b>Engines Standard</b>	2x MERCURY VERADO 300 HP approx. 38 knots*	
<b>Engines Option</b>	2x MERCURY VERADO 350 HP approx. 43 knots*	
<b>Design</b>	Allseas Design & FJORD	

\*All performance figures are given in good faith and are intended as an indication. These figures cannot be guaranteed as the top speed in particular is affected by the cleanliness of the hull, conditions of the propellers, weight carried and air/sea temperature. FJORD reserves the right to change specifications in line with the company policy of improvement through research and development. Errors and omissions expected. Please check with your dealer for a full list of inclusions. Above specifications are non-contractual. Valid from 01.01.2020

**38**  
*xpress*

*THE*

*FOREVER*  
**ORIGINAL**

---

**FJORD**



*52 open*



*44 open*



*40 open*



*38 open*



*44 coupé*



*38 xpress*

FJORD / Ladebower Chaussee 11 / 17493 Greifswald

*This brochure is not contractual. The yachts depicted partly comprise special equipment not included in the standard scope of supply. Illustrations may not correspond with current versions. Subject to alterations in design and equipment without notice and errors excepted. Printing: Druckhaus Panzig. Design: smz GmbH. Photos: Nico Krauss. Renderings: alpha3*

*CIBF38xp/A/GB0120*

